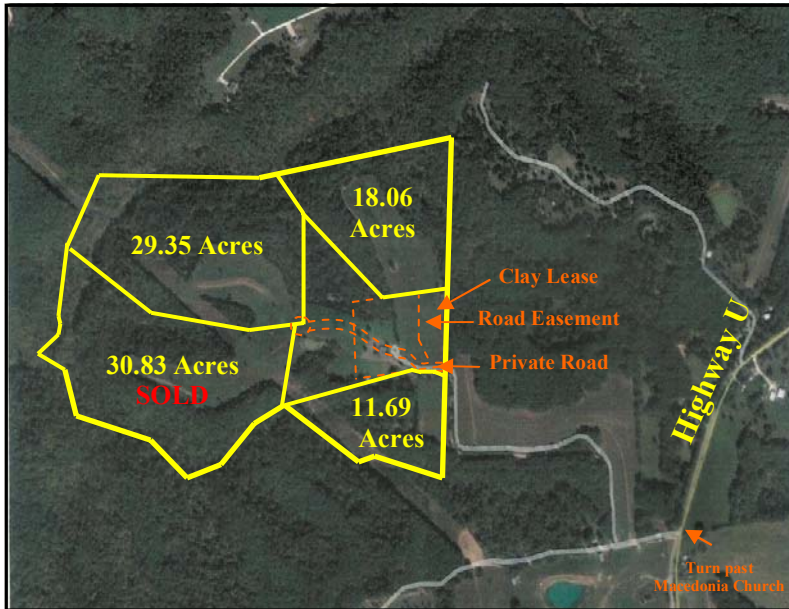


FOR SALE

107.28 Acres on Highway U



GORGEOUS MIX OF OPEN & WOODED ACREAGE!

- Many nice home sites with incredible views!
- Mixture of pasture & woods
- Gently rolling hills
- Just off State Hwy U
- Warrenton School District



STATE HIGHWAY U WARRENTON, MO 63383

11.69 ACRES: \$5,800/ACRE
29.35 ACRES: \$4,426/ACRE
18.06 ACRES: \$5,300/ACRE

Gorgeous mixture of open and wooded acreage. Gently rolling hills, plenty of open fields surrounded by nice tree lines and some fencing. Many great building sites! Great location, just off Highway U and close to town.

Directions: 70 W to Warrenton exit, #193. South on Hwy 47 to Kroger intersection. Right on Hwy MM (Booneslick) to left on Hwy U. Go approx. 5 miles to gravel rd on right, just past Macedonia Church. Road is not marked, call agent for specifics on where to turn. Property is approximately 1/4 mile off Hwy U.

For more information please contact:
Philip Reid or Michelle Smith 636-456-5922