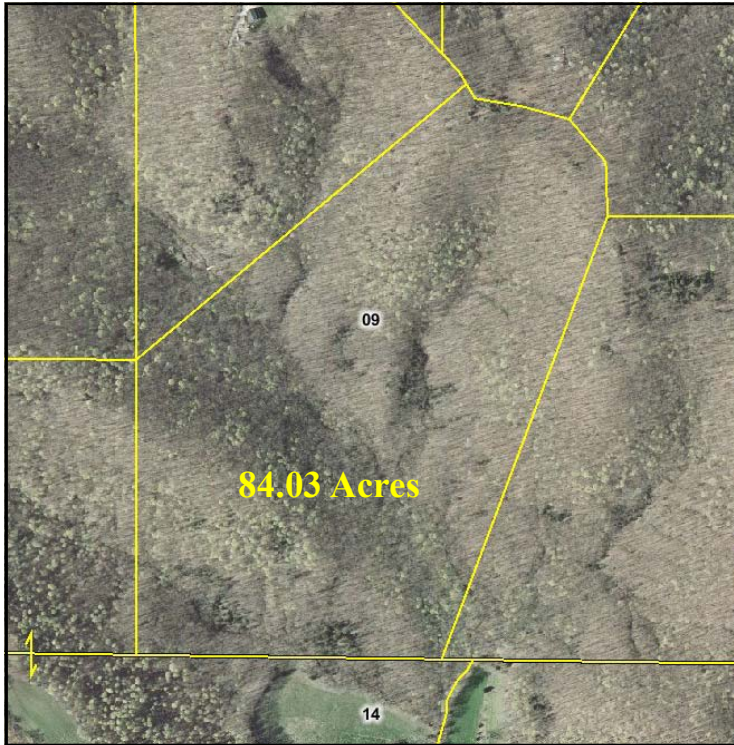


# FOR SALE

## 84.03 acres Spring Branch Rd



### WOODED ACREAGE WITH GREAT VIEWS!

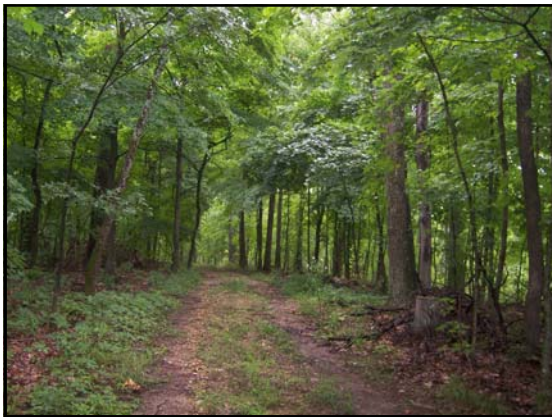
- Mostly wooded acreage
- Nice secluded area
- Good building sites!
- Great for hunting/recreation!
- Warrenton School District

**PRICE REDUCED!!!**

**SPRING BRANCH ROAD  
WARRENTON, MO 63383**

**LOT SIZE: 84.03 ACRES**

**PRICE: \$3,000 / ACRE**



Beautiful wooded acreage in the rolling hills of southern Warren County. Makes a great private home site or an ideal property for recreation, hunting or a secluded weekend get away. Small shed located on property.

Directions: Take Highway 70 West to the Warrenton exit, # 193. Turn left on S. Hwy 47 and go 1/2 mile to the Kroger intersection. Turn right on Main Street for 3/10 mile. Veer left on Hwy U for 7.6 miles to left on Meremonte. Continue 1 mile to right on Spring Branch Vinemont, go for 0.3 miles to fork, continue straight onto Vinemont for 0.9 miles, then veer to right (no sign marking rd, you'll see 2 driveways), property will be another 6/10 mile on right. Watch for signs.

For more information please contact:  
**Michelle Smith or Philip Reid 636-456-5922**